



Plot 81 Kneeton Grove

, East Bridgford, NG13 8NY
£559,995

Plot 81 - The Ingleby, Kneeton Grove, East Bridgford

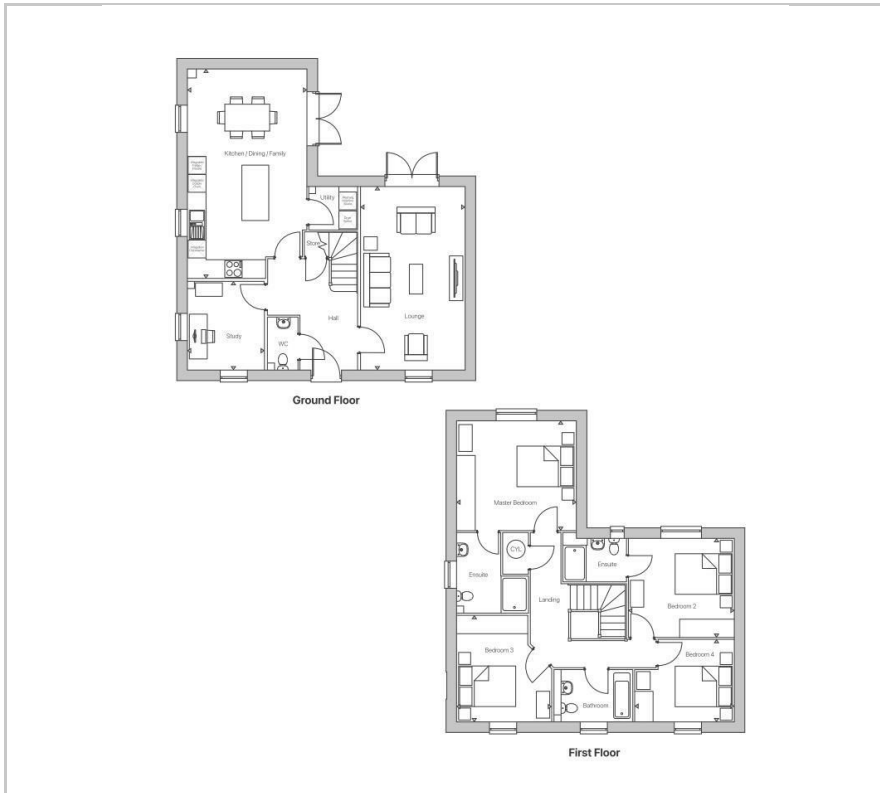
Occupying a superb position at the end of a private driveway and enjoying open views towards neighbouring fields, Plot 81 - The Ingleby is an exceptional four-bedroom detached family home offering spacious and versatile accommodation extending to approximately 2,235 sq ft. Built by the award-winning Peveril Homes and ready for Summer 2026, this impressive residence combines contemporary open-plan living with generous family space in one of Nottinghamshire's most sought-after village settings.

The ground floor has been thoughtfully designed around modern family living. At the heart of the home is a stunning open-plan kitchen, dining and family room featuring a central island and ample space for entertaining, everyday dining and relaxation. French doors open directly onto the rear garden, creating a seamless connection between indoor and outdoor living. A separate utility room provides additional practicality, while the spacious dual-aspect lounge offers a comfortable retreat for quieter evenings. Completing the ground floor is a dedicated study, ideal for home working, together with a convenient guest WC.

Viewing

Please contact our Berkley Leicester Office on 0116 2544755 if you wish to arrange a viewing appointment for this property or require further information.

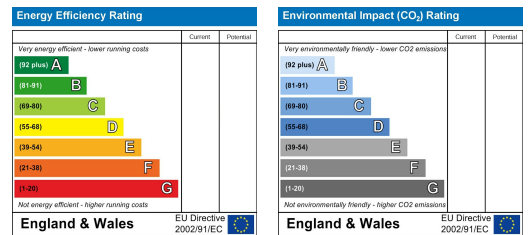
Floor Plan



Area Map



Energy Efficiency Graph



These particulars, whilst believed to be accurate are set out as a general outline only for guidance and do not constitute any part of an offer or contract. Intending purchasers should not rely on them as statements of representation of fact, but must satisfy themselves by inspection or otherwise as to their accuracy. No person in this firm's employment has the authority to make or give any representation or warranty in respect of the property.